



A QUANTA SERVICES COMPANY

# BALCONY FALLS

PROBLEM SOLVING IN RUGGED TERRAIN: PRESERVING THE NATURAL ENVIRONMENT WITH THE BALCONY FALLS PROJECT

**SERVICE:** Transmission

**LOCATION:** Jefferson National Forest, Virginia

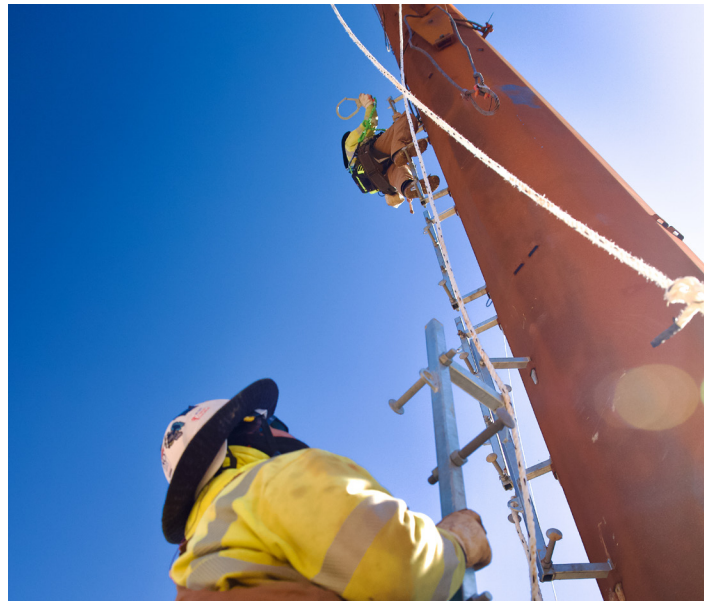
**DATE:** Spring 2025

**SCOPE:** A five-mile, 115kV double circuit transmission line through Virginia's national forests, including the installation of 49 structures across remote, difficult-access locations.

In 2025, Service Electric completed construction of a new double circuit transmission line through rugged terrain in Virginia. The Balcony Falls project covered approximately five miles of 115kV line, running through the George Washington and Jefferson National Forests and crossing the scenic James River.

This build was far from routine. It encompassed 49 structures that required installation across mountainous and environmentally sensitive areas, with limited access and no opportunity for conventional construction methods. With more than 40 Service Electric personnel on site, the team worked hand-in-hand with the U.S. Forest Service and our customer to preserve the natural environment while delivering critical infrastructure.

Much of the route had to be constructed using aviation support due to the remote location and lack of traditional access.



Despite the challenges, the Service Electric team once again demonstrated its ability to adapt, problem-solve, and deliver with excellence.